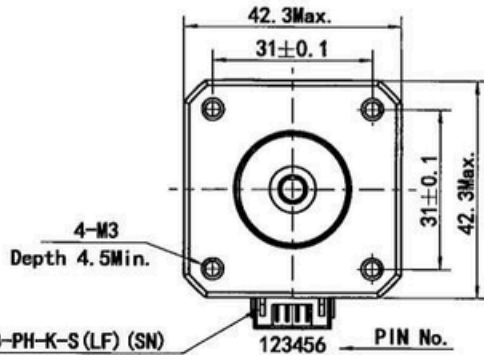
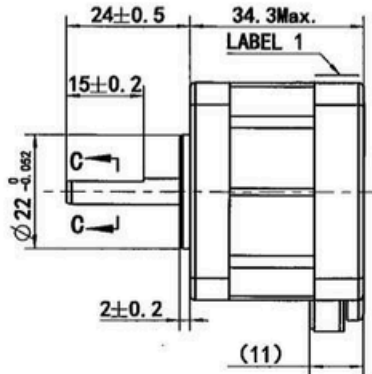
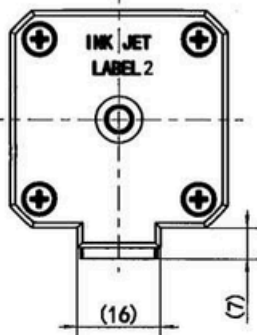
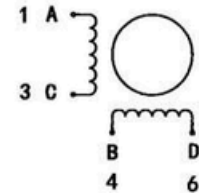


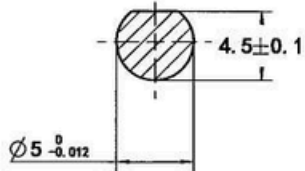
MS17HD4P4040



Wiring Diagram



C-C (3:1)



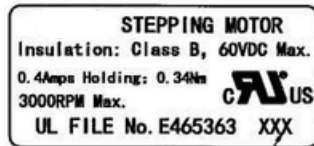
Exciting Sequence vs. Direction of Rotation

STEP	A	B	C	D	CCW
1	+	+	-	-	
2	-	+	+	-	
3	-	-	+	+	
4	+	-	-	+	

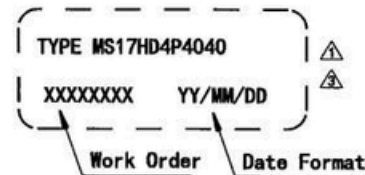
Clockwise view from mounting side

1. Number of Phase	2
2. Step Angle	1.8°
3. Rated Voltage	12 V DC
4. Rated Current	0.4 Amp
5. Holding Torque	0.34 Nm Typ. (Two phase on/rated current)
6. Phase Resistance	30 ohm±10% (20°C)
7. Phase Inductance	51 mH±20% (1kHz 1V rms)
8. Rotor Inertia	38 gcm ²
9. Motor Weight	0.21 kg
10. Insulation Class	B (130°C)

Label 1 Detail



Label 2 Detail



			Unit:mm							
			First angle method							
C1	ECR:23-317	2023.03.25	Tolerances for linear and angular dimensions without individual tolerance indications GB/T 1804-m eqv ISO 2768-1:m Geometrical tolerance for features without individual tolerance indications GB/T 1184-K eqv ISO 2768-2:K	Approve						
C0	Update nameplate	2017.04.24		Standardize						
B0	310mNm Min, 49.5mH, Change the nameplate	2013.01.24		Process Review						
A0	Original revision	2011.07.18		Check						
REV.	REVISION RECORD	DATE	UNLESS OTHERWISE SPECIFIED	Design						Drawing No: 4611110008894